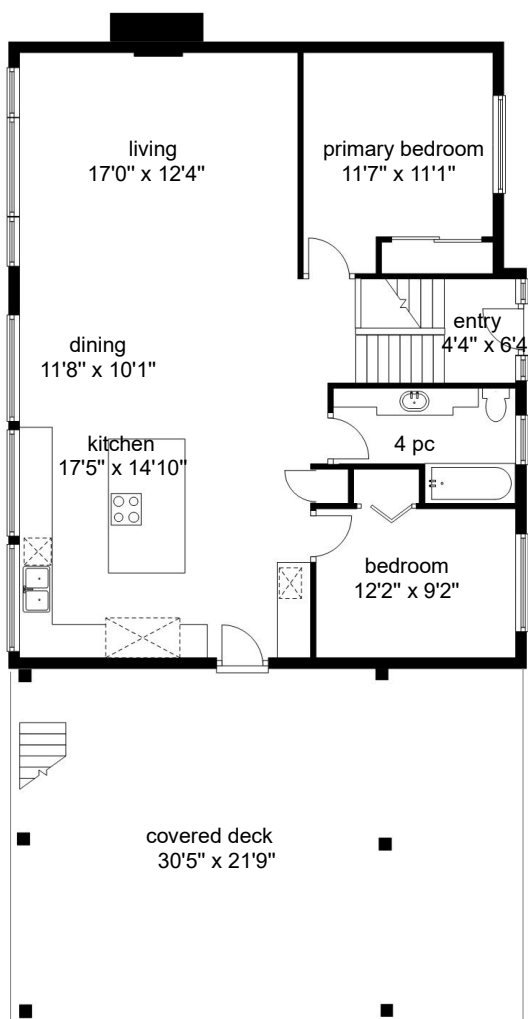
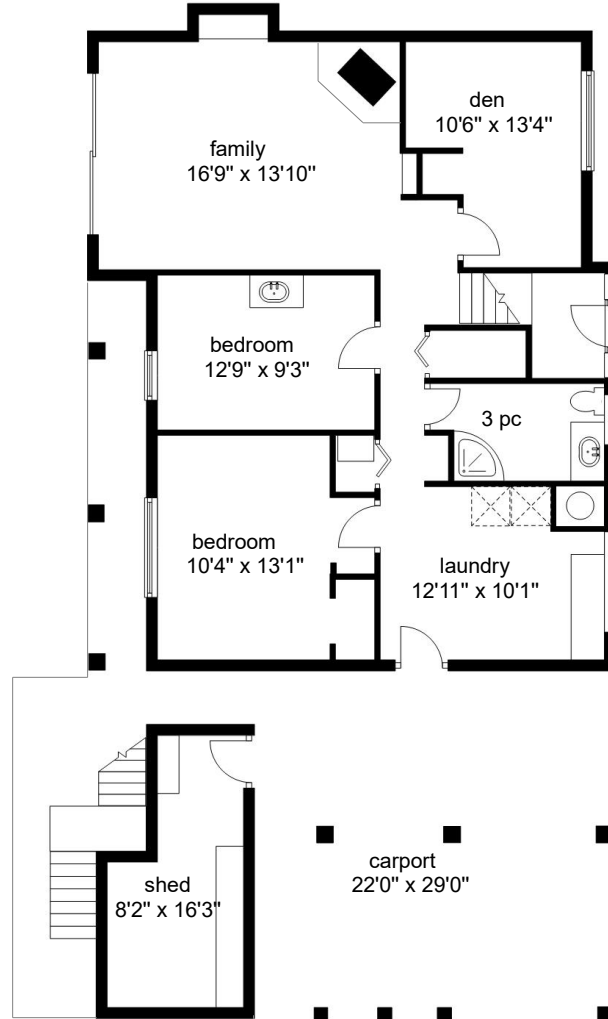


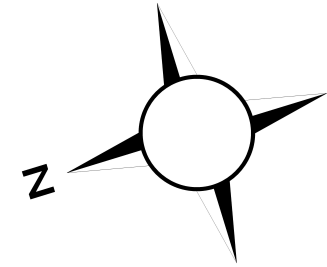
3828 Laurel Drive, Royston.
Approx. total finished floor area 2242 sq.ft.



MAIN 1167 sq ft
ceiling height 7'11"



LOWER 1075 sq ft
ceiling height 7'8"



Floor plans detailed for Tracy Fogtmann RE/MAX Ocean Pacific 250-339-2021
Measurements on the plans are intended for visual reference purposes only and should be verified

