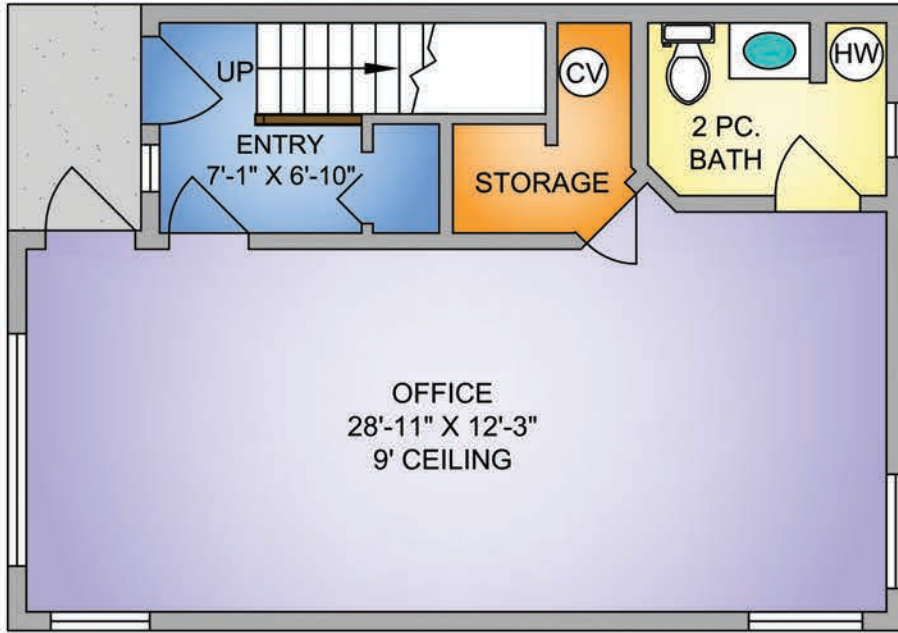
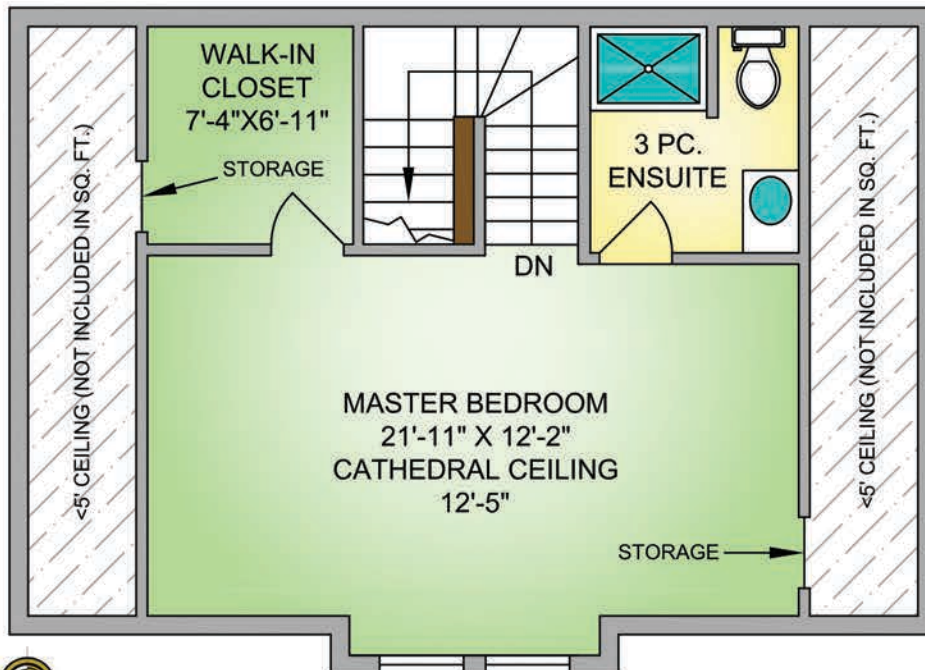
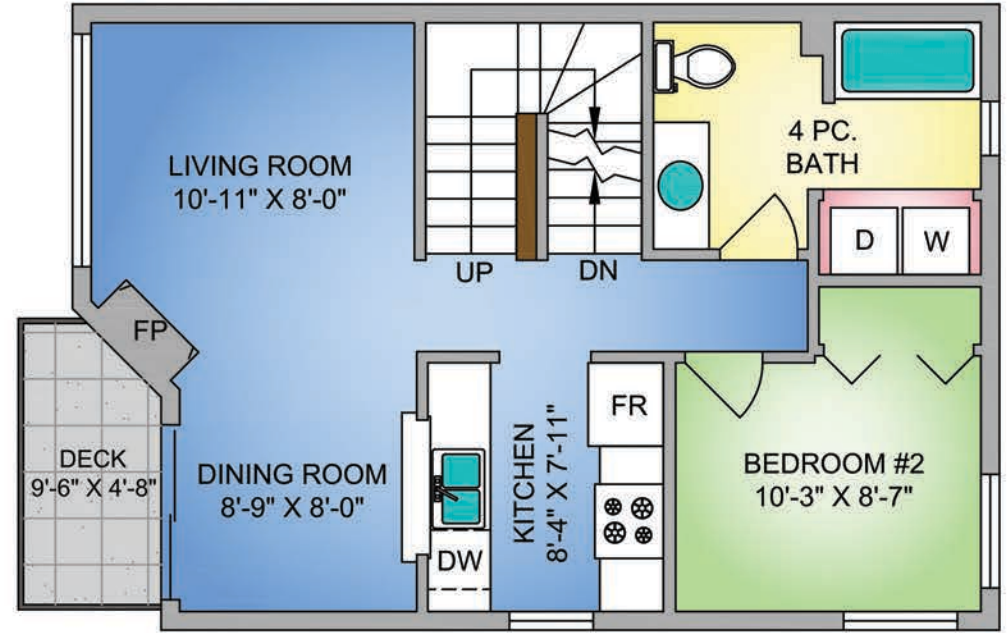


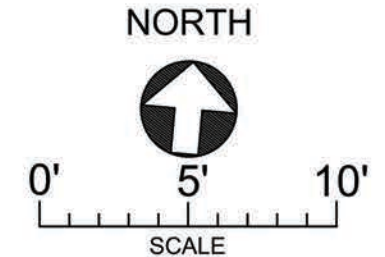
LOWER FLOOR 602 SQ. FT.



MAIN FLOOR 629 SQ. FT.



UPPER FLOOR 491 SQ. FT.



UNITS 612 & 622 - 3030 KILPATRICK AVE.
MARCH 22, 2019

Prepared by PROPER MEASURE NORTH ISLAND for the exclusive use of TRACY FOGTMANN
Plans may not be 100% accurate. Buyer must verify any critical measurement.
Private resale or modification of floor plans to a third party by any individual or entity other than Proper Measure North Island is strictly prohibited.

FLOOR	AREA (SQ. FT.)			
	FINISHED	UNDERHEIGHT	GARAGE	DECK / PATIO
MAIN	629	-	-	44
LOWER	602	-	-	-
UPPER	491	180	-	-
TOTAL	1722	180	-	44