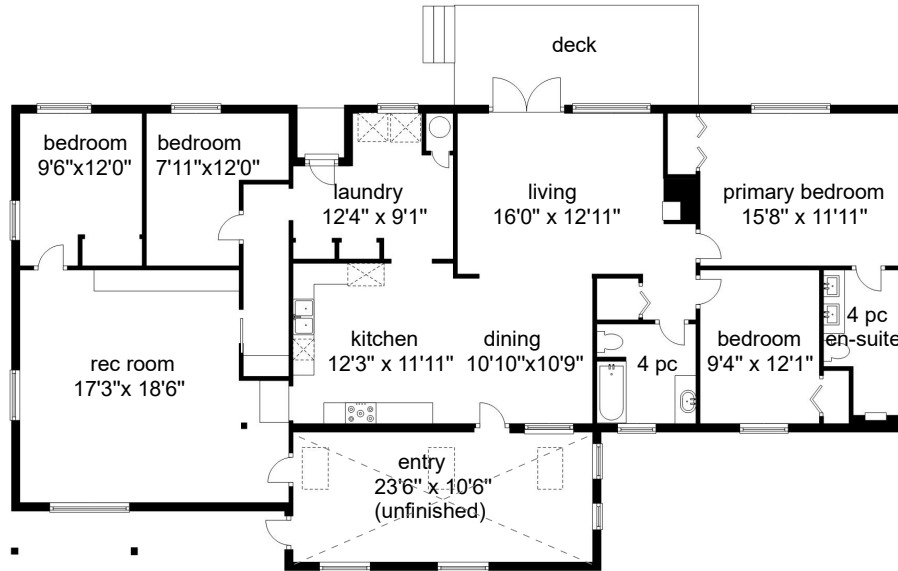
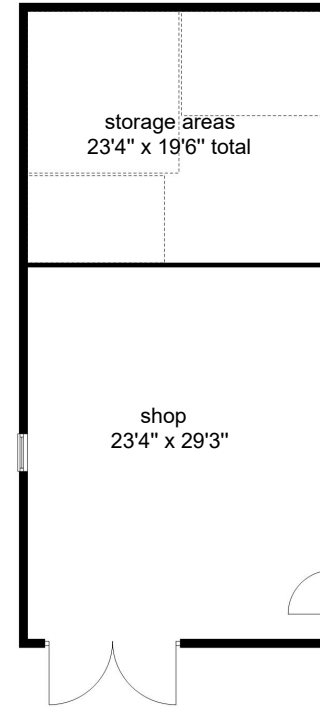


4943 Cliffe Road ,Courtenay

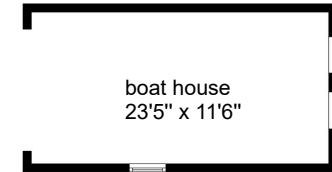
Approx. finished floor area 1919 sq.ft.



MAIN 1919 sq ft finished
267 sq ft unfinished
Ceiling height 8'0"



SHOP / STORAGE 1200 sq ft



BOAT HOUSE 290 sq ft



Floor plans detailed for Tracy Fogtmann RE/MAX Ocean Pacific 250-339-2021
Measurements on the plans are intended for visual reference purposes only and should be verified

