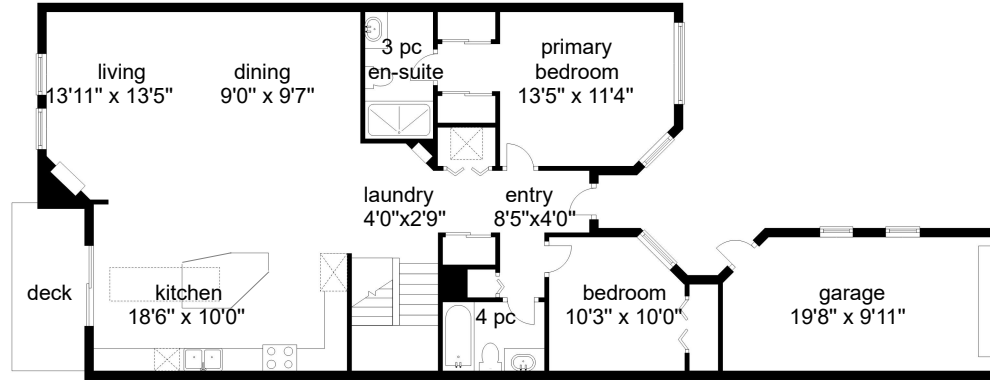
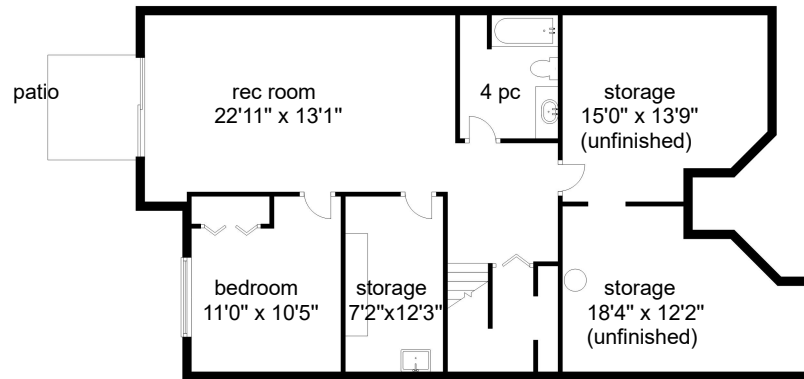


**24 - 1220 Guthrie Road, Comox.**  
**Approx. total finished floor area 2014 sq.ft.**

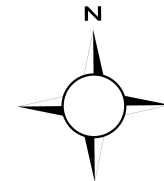


**MAIN** 1222 sq ft  
Ceiling height 9'0"

**GARAGE** 212 sq ft



**LOWER** 792 sq ft finished  
430 sq ft unfinished  
Ceiling height 8'0"



Floor plans detailed for Tracy Fogtmann RE/MAX Ocean Pacific 250-339-2021  
 Measurements on the plans are intended for visual reference purposes only and should be verified

**Clearview Floor Plans**  
250 - 331 - 2564